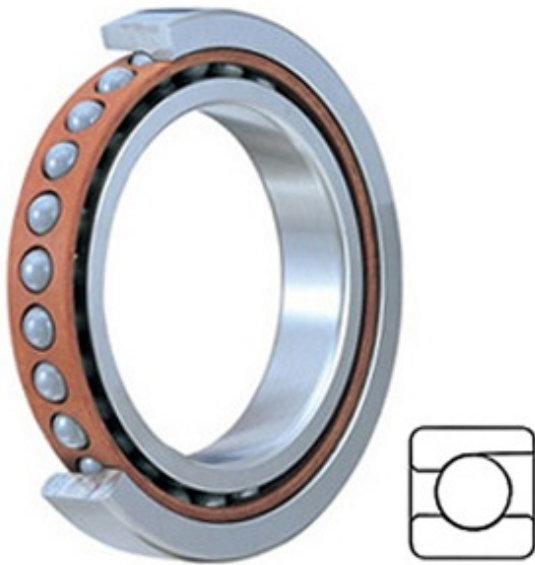




IPH Series PUMP LTD



7204 CDGA/P4A Bearing 2D drawings and 3D CAD models

0.787 Inch | 20 Millimeter x 1.85 Inch | 47 Millimeter x 0.551 Inch | 14 Millimeter SKF 7204 CDGA/P4A Precision Ball Bearings

Bearing No. 7204 CDGA/P4A

Category	Precision Ball Bearings
Inventory	0.0
Manufacturer Name	SKF
Minimum Buy Quantity	N/A
Weight	0.108
EAN	7316570038040
Product Group	B04270
Enclosure	Open
Precision Class	ABEC 7 ISO P4
Material - Ball	Steel
Number of Bearings	1 (Single)
Contact Angle	15 Degree
Preload	Light
Raceway Style	1 Rib Outer Ring
Cage Material	Phenolic
Rolling Element	Ball Bearing
Mounting Arrangement	Universal
Flush Ground	Yes
Inch - Metric	Metric
Other Features	Single Row Angular Contact Super Precision High Capacity
Long Description	20MM Bore; 47MM Outside Diameter; 14MM Width; Open Enclosure; ABEC 7 ISO P4 Precision;



IPH Series PUMP LTD

	Steel Ball Material; 1 (Single) Bearings; 15 Degree Contact Angle; Phenolic Cage Material; 1 Rib Outer Ring Rac
Category	Precision Ball Bearings
UNSPSC	31171531
Harmonized Tariff Code	8482.10.50.28
Noun	Bearing
Keyword String	Angular Contact Ball
Manufacturer URL	http://www.skf.com
Manufacturer Item Number	7204 CDGA/P4A
Weight / LBS	0.238
B	0.551 Inch 14 Millimeter
d	0.787 Inch 20 Millimeter
D	1.85 Inch 47 Millimeter
bore diameter:	20 mm
radial static load capacity:	5.85 kN
outside diameter:	47 mm
maximum rpm (grease):	36000 rpm
overall width:	14 mm
maximum rpm (oil):	53000 rpm
contact angle:	15 °
bearing material:	Steel
duplex type:	Duplex Universal
cage material:	Cotton Fabric Reinforced Phenolic
closure type:	Open
fillet radius:	1 mm
precision rating:	P4
series:	72
operating temperature range:	300 ° F
manufacturer product page:	Click here



IPH Series PUMP LTD

radial dynamic load capacity:	11.9 kN
manufacturer upc number:	7316570038040